

OUTDOOR FURNITURE



Our **Outdoor Furniture** line includes various lounge and seating options to help round out your entire project. With features such as welded aluminum frames and durable powder coat finishes, each piece is designed to withstand daily use as well as the outdoor elements. Since each collection boasts a unique design style, there are several options to help add a distinct visual appearance to any outdoor space.



ROCKLAND SLING

ARM CHAIR
472-40-1000
24 X 29 X 34

SWIVEL ROCKER
462-40-1000
24 X 27 X 34

CHAISE LOUNGE
473-40-1000
26 X 63 X 34

END TABLE
474-40-1900
17 X 17 X 18



SOLID TOP TABLES

36" SQUARE TABLE
469-40-3636

42" ROUND TABLE
469-40-4200

48" ROUND TABLE
469-40-4800



DRAPE UMBRELLA
475-40-2000
7.5 FT DIA



BASE WITH HANDLE
475-40-1300
16 x 16 x 6 in
50lbs



MARKET UMBRELLA
475-40-1900
9 FT DIA



MARKET BASE
475-40-2800
24 x 24 x 13 in
65lbs



MONTAUK CHAIRS

SIDE CHAIR
467-25-1000
22 x 20 x 33 in

ARM CHAIR
472-25-1000
26 x 20 x 33 in



HAMPTON CHAIRS

SIDE CHAIR
467-25-2000
19 x 18 x 34 in

ARM CHAIR
472-25-2000
24 x 18 x 34 in



MONTAUK TABLES

24" x 24"
468-25-2424

36" x 36"
468-25-3636

24" ROUND TABLE
468-25-2400

34" ROUND TABLE
468-25-3400

32" x 32"
468-25-3232

32" x 48"
468-25-3248

32" ROUND TABLE
468-25-3200



HAMPTON TABLES

32" x 32"
469-25-3232

36" x 36"
469-25-3636

24" x 32"
469-25-2432

OUTDOOR FURNITURE SPECIFICATIONS:

ROCKLAND SLING LOUNGE:

- Extruded aluminum frame construction
- Ionized powder coat finish
- Glen Raven Sunbrella sling fabric

SOLID TOP TABLES:

TABLE BASE:

- Extruded aluminum frame construction
- Ionized powder coat finish

TABLE TOPS:

- Stable and robust
- Seamless edges
- Weatherproof and UV-resistant
- Stain resistant
- Heat resistant
- Made from sustainable forest lands
- A patented manufacturing process makes these tops impervious to mechanical, thermal and chemical effects.
- Table coverings are pressed homogenously against the wood material to create a smooth, closed surface that is easy to clean.

HAMPTON TABLES AND CHAIRS:

CHAIRS:

- Welded aluminum construction.
- Durable Titanium Silver powder coat finish
- Chairs have stacking capability
- Each leg is fitted with durable plastic glides to prevent scuff marks and reduce noise
- 300lb weight capacity

TABLES:

- Welded aluminum construction
- Durable Titanium Silver powder coat finish
- Table tops are designed with slatted surface to allow rain to pass through
- Grommet included on table top allows access to weighted center post for umbrella housing
- Table base is fitted with durable plastic glides to prevent scuff marks and reduce noise



MONTAUK TABLES AND CHAIRS:

CHAIRS:

- Welded aluminum construction
- Durable Silver or Black powder coat frame finish
- Seat, back and arm caps are constructed of synthetic teak
- Chairs have stacking capability
- Each leg is fitted with durable plastic glides to prevent scuff marks and reduce noise
- 300lb weight capacity

TABLES:

- Welded aluminum construction
- Durable Silver or Black powder coat frame finish
- Table tops are constructed of synthetic teak
- Table tops are designed with slated surface to allow rain to pass through
- Table base is fitted with durable plastic glides to prevent scuff marks and reduce noise

FINISH OPTIONS:

ROCKLAND SLING FRAME FINISHES:



Black



Desert



Gloss White



Kona

SOLID TOP TABLE COLORS:



Grigia



Rocky Road



White

MONTAUK TABLE / CHAIR FINISHES:

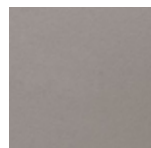


Black



Silver

HAMPTON TABLE / CHAIR FINISHES:



Titanium Silver