



Project Type:
Senior Supportive Housing

Location:
Mott Haven - Bronx, NY

Residential Units:
156 Affordable Senior
Apartments - 48 Studios for
Formerly Homeless Seniors

**Furniture Installation
Completed: March 2020**



Project Background

This nine-story building located on a NYCHA property in the Bronx, provides 156 residences for seniors, including 48 Studios for formerly homeless. There are double height elevator landing lounges on every other floor for tenants to promote socialization and comfortable seating areas. The first floor includes a large senior center that offers daily activities, social services and meals. The lower lobby features a large community room that is open for community use for special events, classes, seminars and social activities. Interior Resources worked closely with the non-profit housing developer and architect on the furniture designs and selections for a variety of areas: supportive studios, lounges, shared spaces, community room, senior center and office spaces. The goal was to create attractive and active spaces that are mindful to the special needs of seniors.



Areas Furnished:

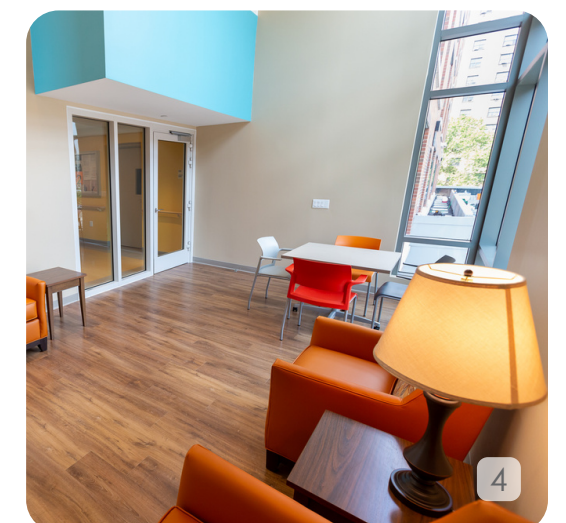
- 48 Studios
- Community room
- Senior Center
- Elevator Landing Lounges
- Large Dining Area
- Social Service Offices
- Lobby
- Activity Rooms

1 EXTERIOR: The exterior of Mill Brook Terrace was designed to create two welcoming fronts for the neighborhood and neighboring NYCHA buildings.

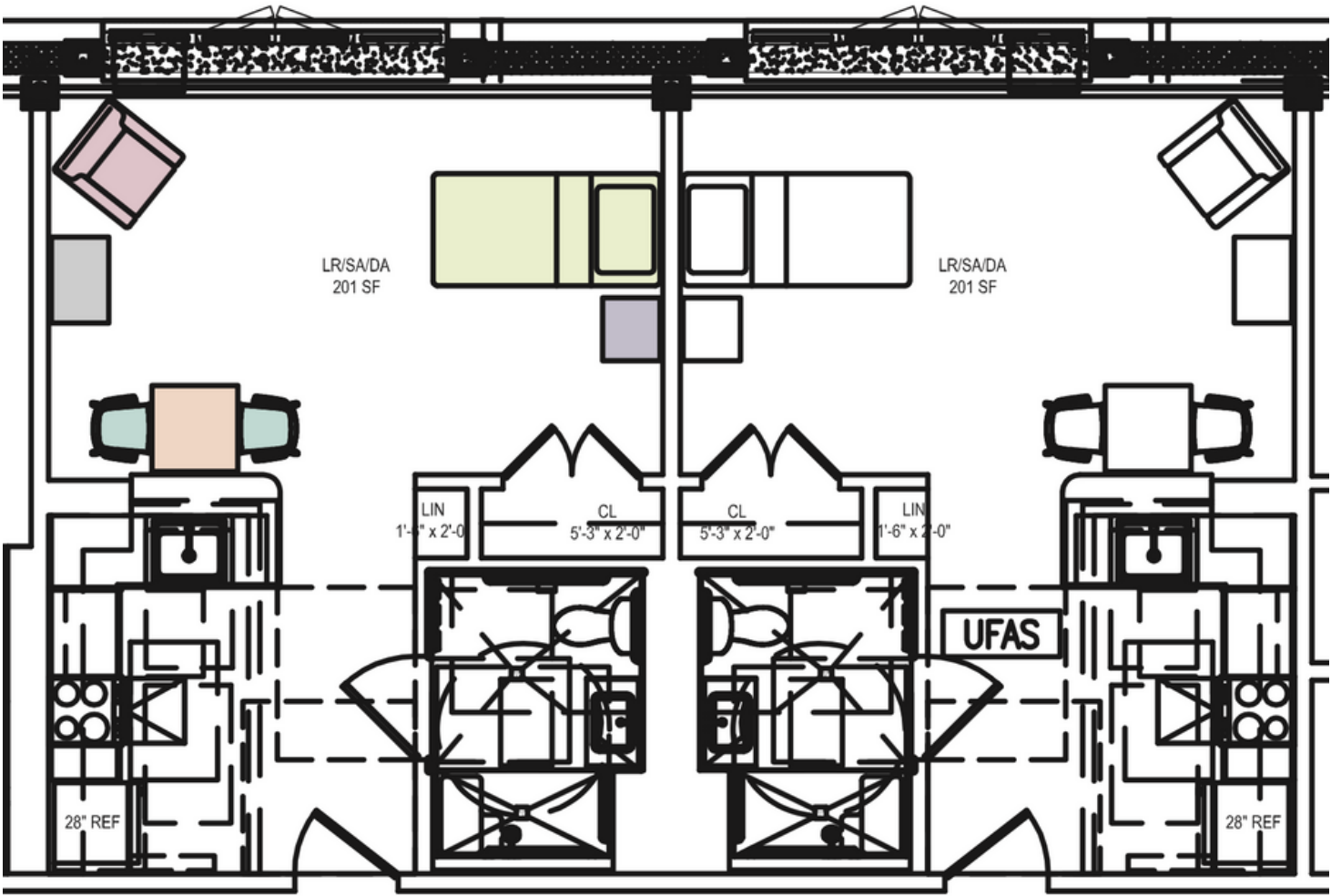
2 SENIOR CENTER AND COMMON AREAS: The 9,000 square foot Senior Center houses a large dining area and commercial kitchen in addition to common areas for senior programming.

3 MULTI-PURPOSE: Flip top tables and stackable chairs promote flexibility and creative functionality in the large dining area and other shared spaces for the Senior Center and Community Room.

4 DOUBLE HEIGHT: Every other residential floor has entry to a double height elevator landing lounge with a Juliet balcony. Each lounge is designed for a specific activity from library to game room.



Typical Studio Apartment Floor Plan



Renderings



Concept View 1



Concept View 2

Typical Studio Apartment Image

Studio Apartment Furnishings

- Empire Steel twin bed
- Elite inverted seam mattress
- Newport nightstand
- Newport media chest
- Syracuse lounge chair
- Café style dining table
- Bakhita dining chairs with arms

Furniture Design and Features

- Multi-functional and sustainable design
- ADA compliant
- Special features for seniors
- Easy cleaning and maintenance
- Durable construction
- Bed bug resistance
- NYS OGS approved furniture



5 STUDIO APARTMENT CONCEPT RENDERINGS VIEW 1: In-house Design Services include color renderings in addition to layouts and color board presentations.

6 STUDIO APARTMENT CONCEPT RENDERINGS VIEW 2: Renderings bring together the architectural room features with the furnishings to give clients a "sneak peek" of the design and layout intentions.

7 FURNISHED STUDIO APARTMENTS (48 TOTAL): Furniture selected by WSFSSH and Perkins Eastman to create warm and attractive environments with a focus on senior special needs.

Project Management Timeline



1

Project Introduction
and Research

2

Space Planning and
Layout Designs

3

Furniture & Design
Presentation

4

Client Review

5

Client Sign-off &
Purchasing

6

Pre-delivery &
Logistics Planning

7

Full Service Delivery &
Installation

"Design creates culture.
Culture shapes values.
Values determine the future."

Robert L. Peters, Designer

