



## Project Background

This Bronx mixed-use building has 115 studio and two bedroom apartments for supportive and affordable housing. There are 69 studios for formerly homeless veterans, homeless adults with mental illness and disabled homeless seniors. Specific design features promote energy savings, safety and wellness with building features such as solar panels, outdoor recreational space and multiple shared spaces. The reception area and community rooms provide comfortable and flexible seating designed to encourage individual interaction and community building. The apartment furniture was selected to create warm and attractive homes for the residents.

### Project:

Veterans Supportive Housing

### Location:

Claremont Village - Bronx, NY

### Residential Units:

115 Affordable and Supportive Apartments - 69 Studios for Formerly Homeless Veterans

**Furniture Installation  
Completed: November 2020**



## Areas Furnished:

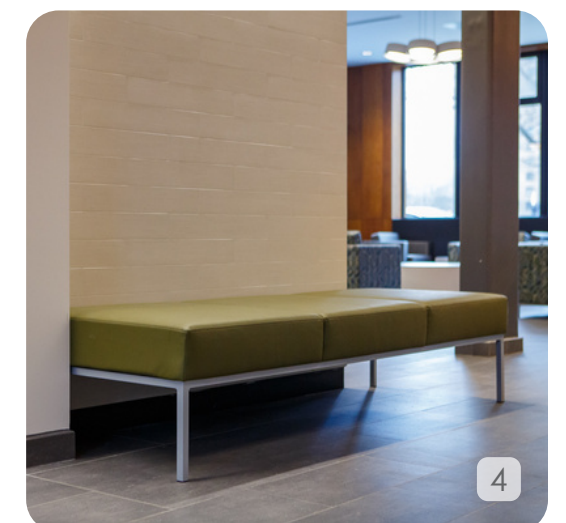
- 69 Studios
- Community Room
- Learning Center
- Social Service Offices
- Property Management Offices
- Lobby Lounge

**1** EXTERIOR: Supportive Housing spans over 67,000 square feet. Solar roof panels have been installed to provide energy savings, and triple pane windows will meet noise reduction requirements.

**2** LOBBY: Reception areas offer residents comfortable lounge seating for individuals and promote community building.

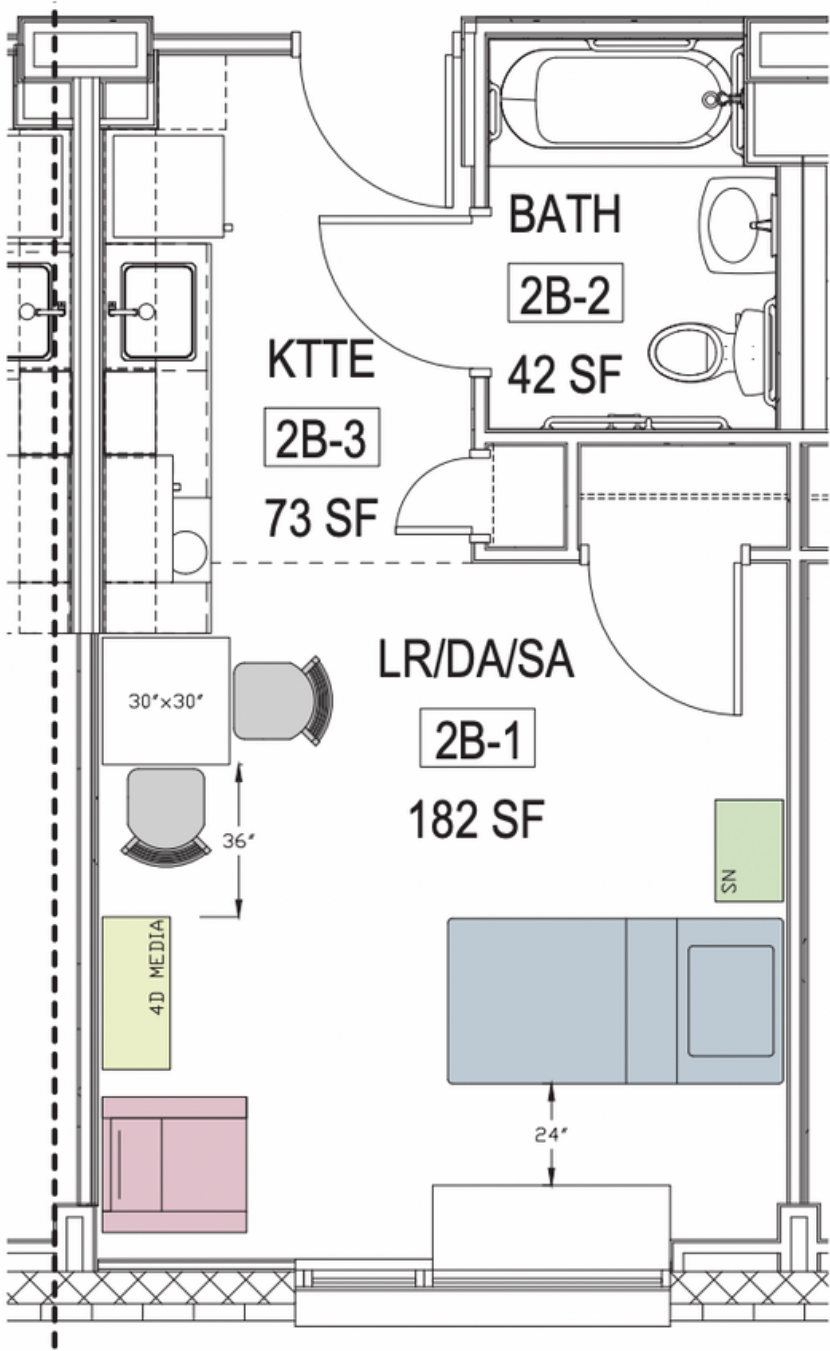
**3** FLEXIBLE SEATING: Individual chairs and side tables were selected for flexible layout design and arrangement.

**4** CLEANING AND MAINTENANCE: Innovative upholstery and open-leg design allow for easy maintenance and cleaning, especially in high traffic areas.





# Typical Studio Apartment Floor Plan



## FURNITURE KEY:

- EMPIRE TWIN BED
- HAVEN NIGHTSTAND
- CONNECTIONS TIGHT BACK CHAIR
- HAVEN 4 DRAWER MEDIA CHEST
- TUFFY CHAIRS

## Furniture Design Features

- Multi-functional and sustainable design
- ADA compliant
- Easy cleaning and maintenance
- Durable construction
- Bed bug resistance
- NYS OGS approved furniture

# Furniture Renderings



Empire Twin Bed



Haven Nightstand



Haven 4 Drawer Media Chest



Laminate Table w/ Metal Cross Base



Tuffy Chairs



Connections Tight Back Chair







1

**FLIP-TOP TABLES & DINING CHAIRS:**

Furniture is easily moved and stored.

2

**SPACE PLANNING:**

Designed to accommodate high traffic area.

3

**LOUNGE SEATING:**

Selected for multi-purpose functions.

4

**COLORS & FINISHES:**

Patterns and designs compliment building features.



"Interior Resources helped us create a welcoming space for our tenants that promotes health and wellness by integrating mindful design and sustainable products."

**Vice President of  
Residential Services**







## Office Suite Designed for Flexible Staffing





## Active Design

Our designs integrate the physical needs of tenants by offering private outdoor space to encourage everyday health and fitness. This method of conscious design brings a new meaning to staying active.

