

A photograph of a modern accent chair with a wooden frame and bright blue cushions. The chair is positioned in a room with light-colored walls, a wooden floor, and a white baseboard. A window is visible on the left, and a white radiator is on the right. A semi-transparent white box with the text 'ACCENT CHAIRS' is overlaid on the left side of the image.

ACCENT CHAIRS

Compliment your lounge area with these beautiful accent chairs. The smaller scale of these chairs allows them to maximize your available space.

There are hundreds of fabrics, vinyls and performance fabrics available. View our fabrics and finishes pages. Every piece is built to meet the Cal 117 fire code. With the four wood finish options available on most pieces, your design possibilities are endless!



BRONXVILLE

012-16-2000
32 x 33 x 32 in



LARCHMONT

012-16-3000
32 x 34 x 37 in



PORTLAND

012-16-4300
28 x 30 x 33 in



OTIS

012-16-7000
25 x 23 x 30 in



FALMOUTH

012-16-4500
32 x 34 x 31 in



JAMESPORT

012-16-4700
30 x 32 x 40 in



BECKET

012-16-9000
30 x 31 x 36 in



REDDING

012-16-4100
25 x 27 x 31 in



DANBURY

012-16-4200
28 x 28 x 32 in



MONTEREY

012-16-8000
29 x 31 x 32 in



SOUTHOLD

012-58-1000
28 x 35 x 31 in



NORTHVILLE

012-58-4000
33 x 33 x 34 in



GREENPORT

012-58-3000
30 x 29 x 29 in



PELHAM II

012-16-6000
34 x 33 x 41 in



PECONIC

012-58-5000
31 x 32 x 35 in



ACCENT CHAIR SPECIFICATIONS:

SEAT AND BACK CUSHIONS:

- High resilient ultra cell polyurethane foam
- All cushions and padding materials meet UFAC & CAL 117

SEAT SUPPORT:

- 8 gauge 60% post consumer recycled sinuous steel springs spaced 5" apart, inter spring connected with two tie wires. Spring system to be secured with additional hardwood stabilized front rail and covered with heavy duty batting and seat denim.

FRAME:

- Frame stocks are harvested from certified sustainable sources. All stress joints to be connected utilizing one of the following: Double dowelled, screwed and glued – corner block, glued and heavy duty frame staples. Glue is polyvinyl acetate.

FINISH:

- Durable catalyzed finish, HAPS free (Hazardous Air Pollutants), Microban antimicrobial treatment, UV inhibitor, and resistant to cleaning chemicals.

GREENPORT, SOUTHOLD, NORTHVILLE, PECONIC:

- Constructed from select kiln dried hardwoods.
- Joints are double dowelled, glued and screwed.
- Corner blocks are glued and screwed with a log bolt through the corner block into the leg for added strength
- Chairs are manufactured with no sag spring seat, attached with RJS clips and covered with wire so all springs go down together
- Chairs are constructed with CAL 117 polyurethane over reinforced frame cover for durability and comfort

FINISH OPTIONS:



Black



Cherrywood



Cocobala



Coffee



Cream



Dark
Chocolate



Empire



English
Chestnut



Fonthill
Pear



Honey



Kensington
Maple



Light Oak



Mahogany



Mocha
Cafelle



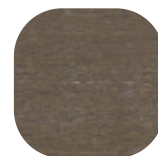
New Age
Oak



Nutwood



Oak



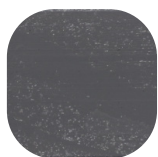
Parisian
Studio Teak



Solar Oak



Spice



Steel



Uptown
Walnut Heights



Walnut



Warm
Columbian
Walnut



Wild Montana
Walnut