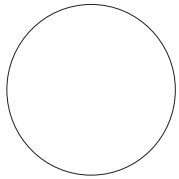


Human Services.

Finishes, pulls & textiles guide

25
YEAR
WARRANTY

Casegood



F008
Bianco



F306
Mineral Grey



F249
Sandalwood



F037
Maple



F282
Fog Mist



F258
Rustic Walnut



F187
Smoky Grey



F157
Modern Teak



F068
Wild Cherry



F165
Modern Walnut



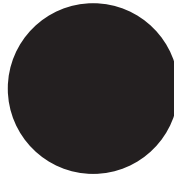
F181
Driftwood Grey



F307
Espresso



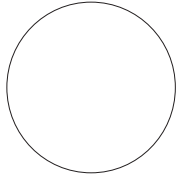
F762
Shadow Oak



F003
Pure Black

Aberdeen Collection exclusively available in Driftwood Grey F181
Lincoln Collection exclusively available in Espresso F307

Dinning Table Top



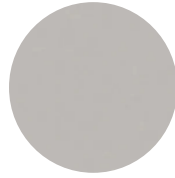
F008
Bianco



F306
Mineral Grey



F305
Antlantic White



F238
Fashion Grey



F249
Sandalwood



F037
Maple



F282
Fog Mist



F258
Rustic Walnut



F187
Smoky Grey



F157
Modern Teak



F068
Wild Cherry



F165
Modern Walnut



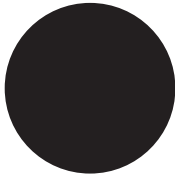
F181
Driftwood Grey



F307
Espresso



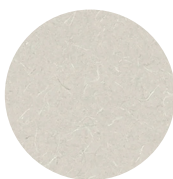
F762
Shadow Oak



F003
Pure Black



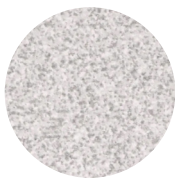
F314
Organic Cotton



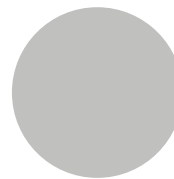
F312
White Tigris



F313
Shadow Zephyr



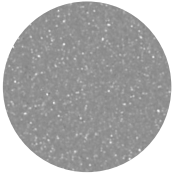
F315
White Nebula



F311
Platinum

Available with upcharge

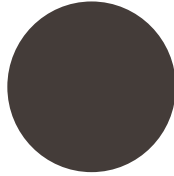
Metal



M010-ST
Aria Grey



M003-ST
Black



M240-PC
Shadow Grey

Aberdeen Collection exclusively available in Shadow Grey M240-PC

Wood



F037
Maple



F068
Wild Cherry



F165
Modern Walnut



F181
Driftwood Grey



F307
Espresso

Aberdeen Collection exclusively available in Driftwood Grey F181
Lincoln Collection exclusively available in Espresso F307

Pulls



ADA compliant

Short Tubular

CODE	LENGTH	FINISH
PGI-142	5 1/4"	Brushed Nickel



ADA compliant

Black Short Tubular

CODE	LENGTH	FINISH
PGI-152	5 1/4"	Black Nickel



Weld

CODE	LENGTH	FINISH
PGI-144	3 15/16"	Brushed Nickel



Short Holm

CODE	LENGTH	FINISH
PGI-113	6 1/4"	Satin Nickel



Holm

CODE	LENGTH	FINISH
PGI-111	13"	Satin Nickel



Arno Silver

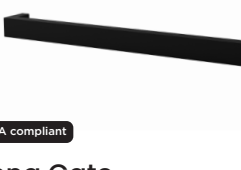
CODE	LENGTH	FINISH
PGI-165	4 1/2"	Brushed Nickel



ADA compliant

Short Gate

CODE	LENGTH	FINISH
PGI-171	10-9/16"	Black Matte



ADA compliant

Long Gate

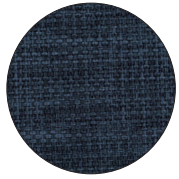
CODE	LENGTH	FINISH
PGI-173	15 5/8"	Black Matte



Arno Black

CODE	LENGTH	FINISH
PGI-167	4 1/2"	Black Nickel

Heritage • **GRADE 4**



Navy



Ash



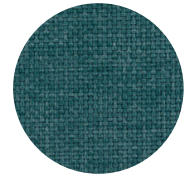
Grey



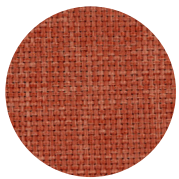
Black



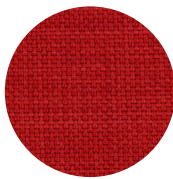
Oatmeal



Caribbean



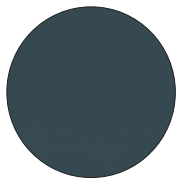
Mango



Red

Fiber	100% Polyester
Abrasion	130,000 Double Rubs
Cleaning code	S
Flammability	California Technical Bulletin #117-2013 UFAC Class 1 NFPA 260 Class

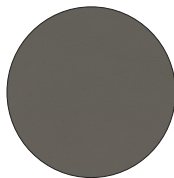
Zenith • **GRADE 4**



Blue



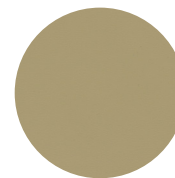
Dove



Grey



Ebony



Ecru



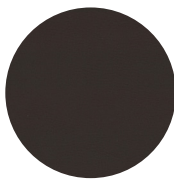
Nude



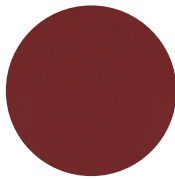
Agate



Desert Palm



Walnut



Garnet

Fiber	65% polyurethane, 25% polyester, 10% viscose
Abrasion	130,000 Double Rubs
Cleaning code	W
Flammability	California Technical Bulletin #117-2013 UFAC Class 1 NFPA 260 Class 1

Sherpa • **GRADE 6**



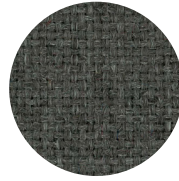
Academy Blue



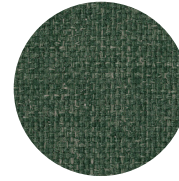
Amber



Black



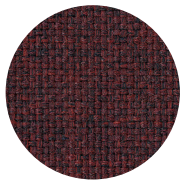
Grey Heather



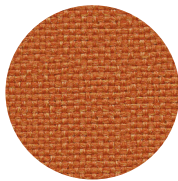
Jade



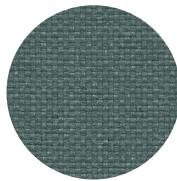
Navy



Newport

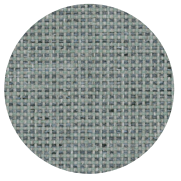


Snappy

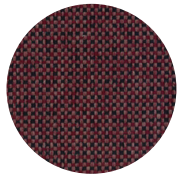


Teal

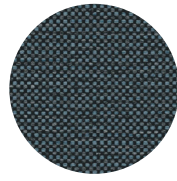
Shire • **GRADE 6**



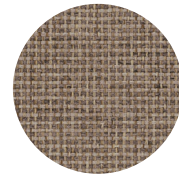
Aqua Tint



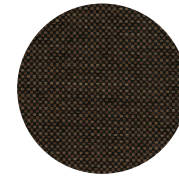
Black Cherry



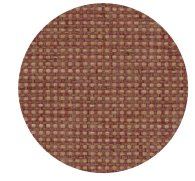
Blue Jay



Concrete



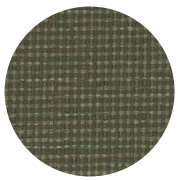
Espresso



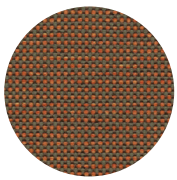
Farm House



Paradise



Patina



Serengeti

Fiber	100% Marquésa Lana
Finish & backing	Acrylic
Abrasion	250,000 double rubs
Cleaning code	WS
Repeat	None (Pattern is woven up the roll and suitable for railloading)
Flammability	California Technical Bulletin 117-2013 / CS-191-53, Class 1 / BIFMA X5.7-1991 / UFAC, Class 1

Dillon • **GRADE 6**



Baltic



Black



Bordeaux



Chilli



Cordovan



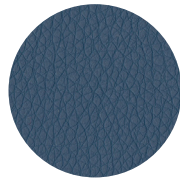
Fiesta



Iron



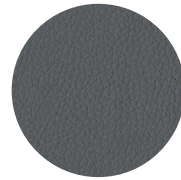
Luggage



Ocean



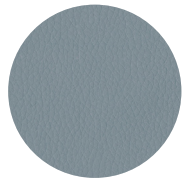
Sage



Thunder



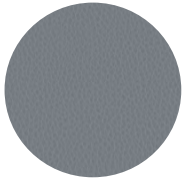
Tusk



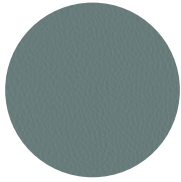
Williamsburg

Fiber	100% Polyurethane
Backing	89% Polyester / 11% Rayon
Abrasion	200,000 Double Rubs
Cleaning code	W
Flammability	California Technical Bulletin 117-2013 / UFAC Class 1 / NFPA 260 Class 1

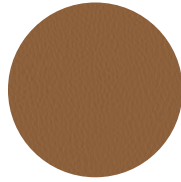
Carson CV • **GRADE 8**



Airy



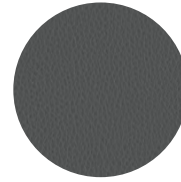
Azure



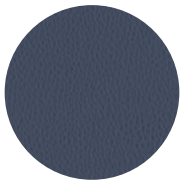
Buck



Sage



Graphite



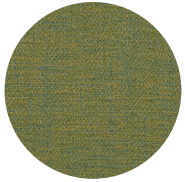
Indigo



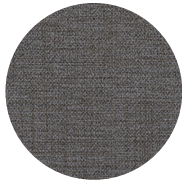
Shadow

Fiber	100% Clean Vinyl / Phthalate Free
Backing	Polyester
Abrasion	500,000 Double Rubs
Cleaning code	W
Flammability	California Technical Bulletin 117-2013 / UFAC Class 1 / NFPA 260 Class 1
Reduced environmental impact	GREENGUARD Certified / NSF 336 Compliant / Singled source fiber content

Mingle • **GRADE 14**



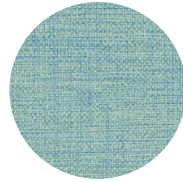
Algae



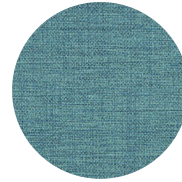
Charcoal



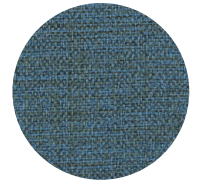
Haze



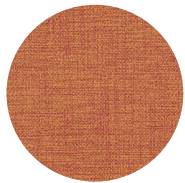
Turquoise



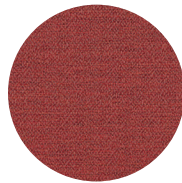
Aqua



Indigo



Persimmon



Rouge



Straw



Latte

Fiber	80% Vinyl / 20% Polyester / Phthalate Free face
Backing	Polyester
Abrasion	250,000 Double Rubs
Cleaning code	W
Flammability	California Technical Bulletin 117-2013 / UFAC Class 1 / NFPA 260 Class 1 / AB 2998 Compliant / FMVSS 302 Compliant



USA

CANADA

New York

Sales and design services

Las Vegas

Manufacturing and assembly

Montreal

Manufacturing and assembly



interiorresourcesusa.com

humanservices@foliot.com

1.800.397.7776